

KENDRION SOLUTIONS

Control block for drinking water supply

Pump control for dental treatment center

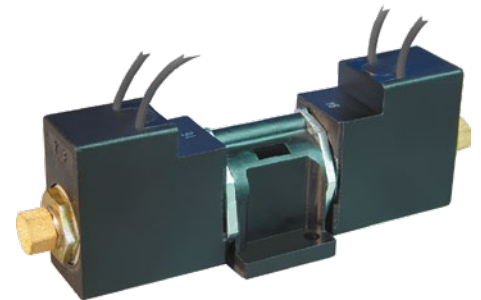
According to DVGW regulations, treatment units in the field of dental technology need to be physically de-coupled from the public drinking water supply. In order to produce the required operating pressure for both instruments and the spittoon, an internal pressure supply is required. Normally, this is achieved by means of piston pumps.

In this application, the piston pump is pneumatically powered by the pump control, which reciprocally supplies pressure to the piston.

The required commands are determined dynamically by the system electronics and processed by the control unit.

Product features

- Low-noise switching
- Complete function group for direct integration



Kendrion Kuhnke Automation GmbH

Lütjenburger Strasse 101
23714 Malente
Germany

T +49 4523 402-0
T +49 4523 402-201
sales-ics@kendrion.com
www.kendrion.com

68/10

